



Universal Mounting Hardware
for Installation on Fiberglass/Composite Surfaces
& Vehicle Roofs Requiring Bolt-Thru Installation



NOTE: Image may represent more than the number of fasteners required.

To be used in conjunction with the instruction sheet and parts from the standard *Aventura*® roof rack (or roof rails) hardware kit included with the unit.



1549 US Highway 21 South
Sparta, NC 28675
336-372-2545

customerservice@perrycraft.com
www.perrycraft.com



Roof Rack/Rail Universal Hardware

Retain these instructions. They are useful if contacting Perrycraft for information, parts, or service.



Before contacting/returning this product to your place of purchase, contact **Perrycraft, Inc.**® at 336-372-2545 for any technical questions, problems, missing parts, etc., upon opening your product and verifying all parts are present.

RETURNS: Any product to be returned must be returned to the place of purchase, and is subject to the seller's returns policy. *DO NOT* return to Perrycraft unless instructed to do so in writing.

Warning: Do not use sheet metal screws to attach roof racks or rails to fiberglass roof panels or bolt-through applications! If used, warranty is null and void.

IMPORTANT NOTE: Please review these instructions and the detailed installation diagrams on Pages 6 & 7 in their entirety before drilling any holes to ensure a trouble-free installation and finished product!

TOOLS REQUIRED:

- Tape Measure
- Hand Drill
- 3/16" Drill Bit (2" or longer)
- 9/32" Drill Bit
- Phillips Screwdriver
- Pliers and/or Adjustable Wrench

CONTENTS:

- 2 - #10-24x1 1/4" Stainless Oval/Phillips Head Machine Screws
- 12 - #10-24x1" Stainless Pan/Phillips Head Machine Screws
- 12 - #10-24 Propeller Tee Nuts
- 14 - 1 1/8" Retainer Washers
- 14 - Black Snap-on Screw Covers
- 14 - #10-24 NyLok Nuts
- 14 - 1/4" Stainless Steel Flat Washers
- 14 - 3/16"x3/8"x1/32" Neoprene Washers
- 1 - Instruction Sheet

(Shorter racks without or containing fewer center posts will not require all fasteners included. If additional fasteners are required, see your local hardware store or call **Perrycraft, Inc.**® at 336-372-2545)

Important Note: For roofs exceeding 1" in thickness, substitute proportionately longer stainless machine screws for the screws furnished. For roof cores 1" thick or less, #10-24x1 1/4 Oval Head Screws are for installation of side rail center posts **only**. For truck caps not having sandwiched core / hollow core roof panels, or for mounting outside a hollow core area, or for mounting in any roof less than 1/2" thick, the propeller tee nuts will not be used.

Sizing & Rail Positioning: Determine the thickness of the roof where rack/rails are to be mounted. If mounting inside the core area of a fiberglass roof, side rails should be positioned so that mounting hardware penetrates the core a minimum of 1" in from edges of core. If mounting outside

core area, position so that mounting hardware penetrates a minimum of 1" outside edges of the core. Roof rack width can be decreased if necessary by cutting down crossbar lengths.

NOTE: Before drilling mounting holes in roof panel, check for appropriate fastener clearance of other roof/cap features such as ribbing, embedded wiring, interior roof attachments, etc.

1. Assemble *Aventura*® roof rack/roof rails as per the instructions included with the rack/rails.

2. Install 3/16"x3/8"x1/32" neoprene washers on all machine screws, positioning washers under heads of screws.

3. Place assembled rack/rails in position to be installed and **secure to roof with masking tape**. Mark location of all mounting holes, except for center posts (when applicable).

When center posts are used, drill 3/16" diameter holes completely through cap or vehicle roof, using the pre-formed mounting holes in the center posts as a guide to obtain the proper angle for the holes to be drilled through the cap or vehicle roof (See Center Post Fig. 1 on Page 6).

4. Remove rack/rails. Using a 3/16" diameter bit, drill thru roof at remaining marked fastener mounting points.

If mounting thru hollow-core area of roof/lid (more than 1/2" thick), continue to step 5; If mounting outside hollow-core area of a truck cap or lid or through roof panels up to 1/2" thick, skip to Step 9.

5. From inside cap or lid, use 9/32" drill bit to ream out all

drilled holes in the **inner fiberglass layer only, except center post holes.**

6. Assemble propeller Tee nuts and retaining washers with flange side of washer down and barrel of Tee nut up (see Figure 1 on Page 6). Press barrel of Tee nuts into 9/32" holes until flange is flush with roof panel, excluding center post holes. Tap **very** lightly with hammer if necessary.

7. Reposition rack or rails on cap/lid and align with pre-drilled holes. Place one neoprene pad underneath each end support and center support post (if included) and the cap roof or lid, ensuring that pad orientation provides proper alignment of screw holes in pad and support.

8. Insert #10-24x1" pan-head machine screws down through stanchion mounting holes from top side of cap and thread into tee nuts using minimal downward pressure to prevent forcing tee nuts out of holes. Be sure each machine screw has a neoprene washer under the head.

Center Post Installation:

Insert #10-24x1 1/4" oval head machine screws through post and roof. Install retainer washer, stainless steel flat washer, NyLok nut, and cover inside cap as detailed in Step 9, illustrated in the drawing (Fig. 2, Page 7). Keep in mind that the fasteners on these support posts will mount at an angle, not vertical as with all other fasteners.

IMPORTANT: Do not overtighten any of the fasteners, as excessive screw torque may damage fiberglass layers or core material and/or force neoprene washers from under screw heads. Use of a liquid thread lock on machine screws is recommended. Proceed to Step 10 now.

9. Installing outside hollow-core area or a roof thickness under 1/2 ": (Two people required for this step; See Figure 2, Page 6) Insert #10-24x1" pan head machine screws down through end supports, and 1 1/4" oval head machine screws through center post (when applicable). Place 1 1/8" retainer Washer against inside of roof with flange side down, followed by 1/4" Stainless Steel flat washer and #10-24 lock nut. Tighten securely. **Do not overtighten,** as excessive screw torque may damage fiberglass and/or force neoprene washers from under screw heads.

10. Snap black plastic screw covers onto retainer washers (Break away any excessive screw shank flush with top of tee or lock nut if necessary to enable plastic screw cover to snap on to retainer washer). NOTE: Center post covers may or may not fit completely flush against inside of cap and/or may be slightly loose fitting. This does not create any functional problem.

Revert to installation instructions that came with roof rack (or rails) for installation procedure of end support covers.

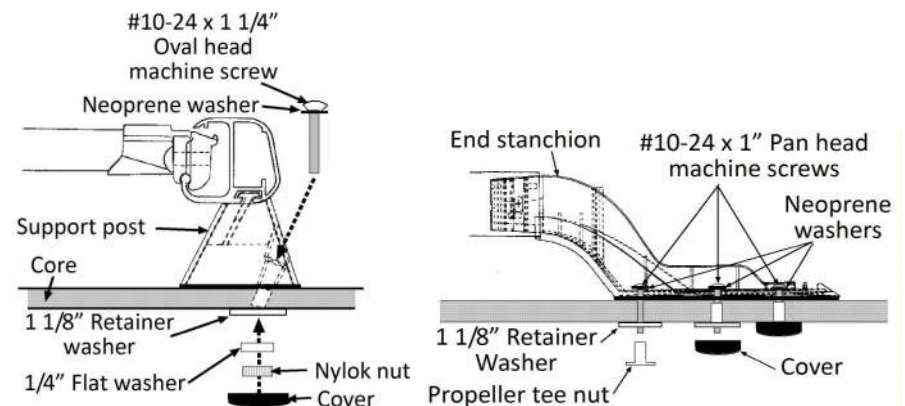


Figure 1

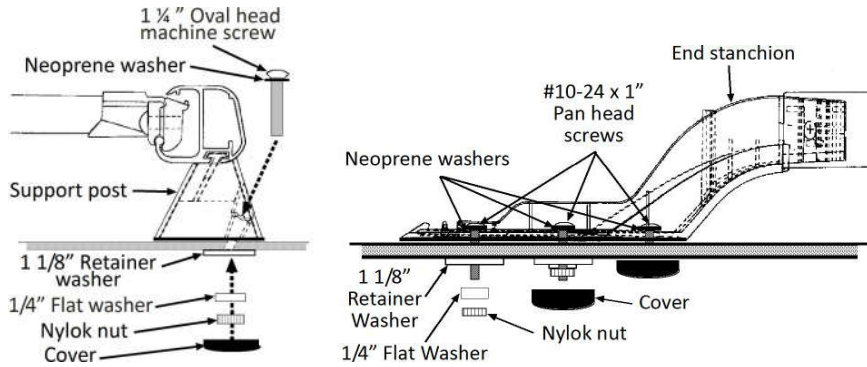


Figure 2

Add-ons for your *Aventura*® Roof Rack:

Perrycraft, Inc.® offers a wide range of [Sports Equipment Carriers](#) for your active lifestyle.



Enhance the use of your *Aventura*® Roof Rails:

Perrycraft recommends the addition of our Mont Blanc *Gripper*® Load Bars, providing a 220-lb. load capacity!



Square Bar



AeroWing Bar

See our website at <http://www.perrycraft.com> for more information on Load Bars & Sports Equipment Carriers.

Perrycraft, Inc.® Warranty Agreement

Three Year Limited Warranty

Perrycraft, Inc.® warrants this product against defective materials and workmanship to the original owner for a period of three (3) years from purchase/install date. This warranty is not valid if product is transferred to another person. *Perrycraft, Inc.*® provides no warranty and accepts no liability for normal wear and tear, incorrect installation, damage to vehicles, property, and/or equipment, nor damage arising from improper use. The sole remedy under this warranty agreement is replacement of component parts during the warranty period. You may be required to send in the component in question (at your expense) to have the part evaluated for a warranty claim.

If you have a warranty issue, and for faster service, please email a digital photo of the product/component in question, a brief description of the situation, your contact information, and a copy of your purchase receipt to techsupport@perrycraft.com. Our staff will contact you as soon as possible to resolve the issue.

Registering Your Perrycraft Product

Thank you for your purchase of our product. Our goal is to manufacture quality products that meet or exceed your expectations. We want to make sure the product you have is registered with us in case there are any issues that may arise. Please register your product by sending an email to customerservice@perrycraft.com with your name, product purchased, purchase date, install date (if different than purchase date), phone number, and a scanned copy of your receipt. We promise not to send spam emails, but may contact you periodically with updated product information, questions about your usage for research purposes, or safety information.